

ArmstrongFlooring™

LVT FLOORING

UNIFY

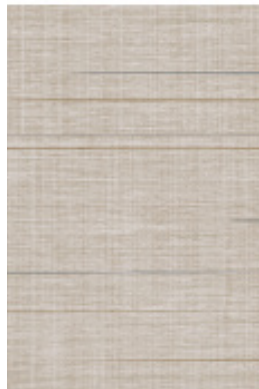
PACIFIC MAT STOCKING PROGRAM



ARJ7201821
Norse
18" x 18"



ARJ7202821
Fjord
18" x 18"



ARJ7203821
Dobby
18" x 18"



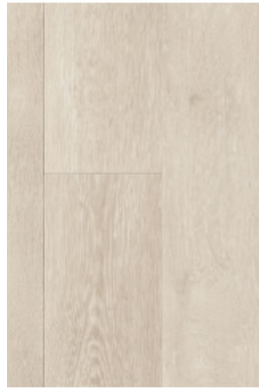
ARJ7204821
Ekelund
18" x 18"



ARJ7205611
Artek
6" x 36"



ARJ7206611
Halden
6" x 36"



ARJ7207641
Ribe
6" x 48"



ARJ7208641
Elmshorn
6" x 48"



ARJ7209641
Saga
6" x 48"



ARJ7210641
Dynt
6" x 48"



ARJ7211641
Solvang
6" x 48"



ARJ7212641
Odense
6" x 48"

DIMENSIONS

18" x 18" Tiles
6" x 36" Planks
6" x 48" Planks
2.5 mm Thickness Overall

WEAR LAYER

20 mil

FINISH

Urethane Plus

CONSTRUCTION

Glue Down LVT

WARRANTY

15 Year Commercial

ADHESIVE

S-995, S-1000 or S-319



**QUICK
SHIP**

Stocked by Pacific Mat
5 Days from mill up to 2,500 sf
10 Days from mill up to 20,000 sf



**MADE IN
THE USA**



SCS certified

For complete sustainability, certifications, and testing information, view the specification sheet

December 2022



Call your local sales rep for additional specifications, full installation instructions and warranty information.
(800) 345-6287 | pacmat.com | info@pacmat.com