



**PACIFIC**  
MAT & FLOORING

# MATTING GUIDE

1.800.345.6287 | [www.pacmat.com](http://www.pacmat.com) | [info@pacmat.com](mailto:info@pacmat.com)



MM	Inches in Decimals	Inches
0.7	0.0273	1/64"
0.8	0.032	1/32"
1	0.039	1/32"
1.5	0.059	3/64"
1.6	0.063	1/16"
2	0.079	5/64"
2.5	0.098	3/32"
3	0.118	7/64"
3.2	0.13	1/8"
3.5	0.138	9/64"
4	0.158	5/32"
5	0.197	3/16"
6	0.236	7/32"
6.5	0.256	1/4"
8	0.315	5/16"
10	0.394	3/8"
12	0.472	15/32"
12.7	0.5	1/2"
14.5	0.567	9/16"
15	0.59	19/32"
16	0.631	5/8"
20	0.787	3/4"
22	0.866	7/8"
25.4	1.001	1.0"



# ABOUT US

---

Pacific Mat & Commercial Flooring is a wholesale distributor that has been an industry leader for over 70 years! We provide flooring solutions in residential, commercial and industrial flooring, custom lobby and entrance matting, and custom logo flooring.

Pacific Mat provides consistent, top-quality service and flexibility each customer requires, with affordable custom options. Since 1946, Pacific Mat has remained committed to serving our customers with competitive pricing, on-trend floor coverings and best-in-class customer service.



## ANTI FATIGUE

Air Strip / Comfort Zone.....	3
Cushion Step / Cushion Comfort.....	3
Safe & Easy / Safety Soft Foot.....	4
Soft Foot / Tough Sponge.....	4

## MATTING

Chevron Rib.....	5
Apache Rib / Needle Rib.....	5
Pacific Traditional / Standard Tuff Olefin.....	6
Pacific Plush / Plush Tuff Olefin.....	6
Super Scrape.....	7
Safety Scrape.....	7
Waterhog Classic .....	8

## PRODUCTION MATS

Logo Mats.....	9
Edging & Seaming .....	11

## ROLL GOODS

Super Nop 52.....	12
Berber Nop .....	12
New York.....	13
Chicago .....	14
Quill Tuft.....	15
Cocoa (Brush Fiber).....	16

# MODULAR TILE



Super Nop 52 Tile .....	17
Diagonal Tile.....	17
Waterhog Classic Tile.....	18
Tire Tile .....	18

# GRATES & FRAMES

Reese Roll-Up Grate.....	19, 20
--------------------------	--------

# GYM & SPORTS

Gym Shield I .....	21
--------------------	----

# KEY



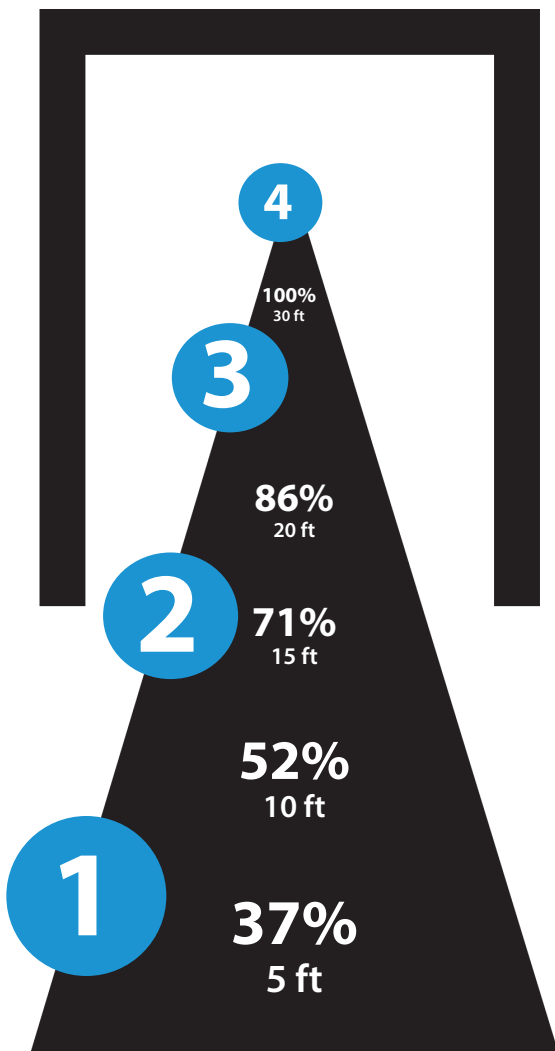
Product Available for Logo Mats



Green Product

1

# CleanZone™



A 30 foot entrance system is recommended to remove nearly 100% of the dirt that comes through the door!

An entrance system of scraping and drying mats will remove up to 10 times more dirt than just a carpet mat alone.

The best entrance performance is achieved with a customized, three-part walk off system which we call the CleanZone™. Providing effective walk-off performance from the exterior of a building (Zone 1), through the vestibule (Zone 2) and into the lobby (Zone 3).

## 1

### **ZONE 1: EXTERIOR**

In outdoor, covered entrance areas - choose an aggressive scraping product that is as maintenance-free as possible, such as Grates and Grills, Legacy Nop, Super Nop 52, Quill Tuft or Tire Tile.

## 2

### **ZONE 2: VESTIBULE**

In indoor spaces between the exterior and interior doors, choose a product that scrapes off soil and absorbs moisture like Legacy Nop, or Super Nop 52. Mats should be heel-proof and ADA compliant.

## 3

### **ZONE 3: LOBBY**

In indoor lobby areas, nylon fibers offer optimal performance in applications requiring additional moisture absorption like those in the New York Collection, Protect In and Trilogy. Nylon fibers are ideal for applications requiring additional debris removal.

*\*Effective walk off performance requires a minimum of 20-30 linear feet of matting.*

## 4

### **ZONE 4: INTERIOR**

Inside facilities choose a style / performance combination best suited for the application using one of our many sports and contract flooring products.

## AIR COMFORT / COMFORT ZONE

---

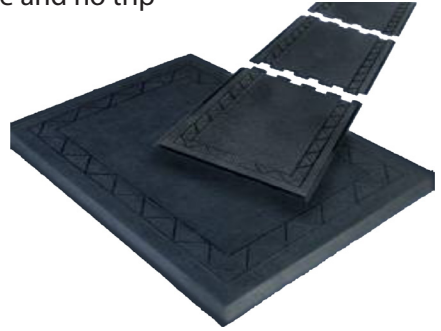
Available in general purpose and grease resistant surfaces. Features air pockets on underside and no trip beveled edges.

**MATERIAL:** Rubber

**THICKNESS:** 1/2"

**SIZE(S):** 28" x 36"

**COLOR(S):** Black



## CUSHION STEP / CUSHION COMFORT

---

Durable, puncture-resistant surface (vinyl).  
Traction and stability (rubber).



**MATERIAL:** Rubber And Vinyl

**THICKNESS:** 1/2"

**SIZE(S):**

Mats - 2'x3', 3'x5', 3'x12'

Custom Cuts - 2', 3', 4' x up to 60'

**COLOR(S):**

Vinyl - Black, French Gray

Rubber - Black, French Gray, Tan,  
Brown, Blue, Gray

# ANTI FATIGUE

## SAFE & EASY / SAFETY SOFT FOOT

Increased comfort, productivity and safety. Provide path away from hazardous / unsafe areas. Polyurethane coat for extra durability and easier clean up.

**MATERIAL:** Sponge Vinyl  
(Pebbly or Standard ribbed surfaces)

**THICKNESS:** 3/8"

**SIZE(S):**

Mats - 2'x3', 3'x5'

Custom Cuts - 36", 48" x up to 60'

**COLOR(S):** Black with yellow



## SOFT FOOT / TOUGH SPONGE

Reduces standing trauma and increases productivity available with polyurethane coating. Beveled Edges.



**MATERIAL:** Sponge Vinyl

**THICKNESS:** 3/8", 1/4"

**SIZE(S):**

Mats - 3/8", 3', 4'

Custom Cuts - 3/8", 1/4", 2', 6',  
up to 60', 27" x 36", 27" x 60",  
36" x 60"

**COLOR(S):** Gray, Black  
(Standard & Pebble embossed)

# ANTI FATIGUE

## CHEVRON RIB

Designed for high traffic entrances. Bi-level carpet construction traps and hides dirt. Stain and fade resistant with slip resistant vinyl backing.

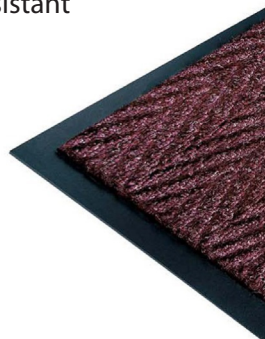
**MATERIAL:** 100% Solution-dyed polypropylene with textured heavy-duty vinyl backing

**SIZE(S):**

Mats - 3' x 5', 4' x 6' / Custom

Custom Cuts - 3', 4', 6' up to 60' long

**COLOR(S):** Stocking Charcoal, Dark Brown



## APACHE RIB / NEEDLE-RIB

Ribbed fiber pattern traps moisture. Quick drying and fade resistant. Gently brushes debris from shoes. Ideal for low traffic entrances.



**MATERIAL:** Polypropylene Fiber with vinyl backing/borders

**SIZE(S):**

Mats - 3' x 5', 4' x 6' / Custom

Custom Cuts - 3', 4', 6' x up to 60'

**COLOR(S):** Stocking Pepper, Solid Gray, Cocoa Brown

\*Special order: Moss Green, Williamsburg Blue, Russet Red

# MATTING

## PACIFIC TRADITIONAL / STANDARD TUFF OLEFIN

Superior performance at value pricing. Dries quick and easily maintained. Ideal for light traffic areas.

**MATERIAL:** Standard Pile

100% Solution-dyed olefin with standard vinyl backing

**SIZE(S):**

Mats - 3' x 5', 4' x 6'

Custom Cuts - 3', 4', 6' x up to 60'

**COLOR(S):** Stocking Smoke, Charcoal, Walnut

\*Special Order: Red/Black, Hunter Green, Blue, Beige



## PACIFIC PLUSH / PLUSH TUFF OLEFIN

Keeps dirt, water and grime from ruining floors.

Holds 1 gallon water/sy.



**MATERIAL:** Plush pile 100% Solution-dyed Olefin with standard vinyl backing

**SIZE(S):**

Mats - 3' x 5', 4' x 6' / Custom

Custom Cuts - 3', 4', 6' x up to 60'

**COLOR(S):** Smoke, Charcoal, Walnut,

\*Special Order: Red/Black, Hunter Green, Blue, Beige

# MATTING

## SUPER SCRAPE

Certified slip resistant. Molded tread-surface face cleats to effectively scrape tough dirt and grime. Grease proof.

**MATERIAL:** 100%

Nitrile Rubber

**THICKNESS:** 3/16"

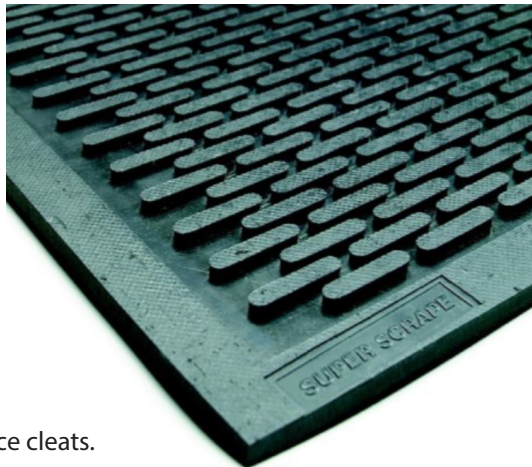
**SIZE(S):** 3' x 5', 4' x 8'

\*Special Order:

2.5' x 3', 3' x 5', 3' x 10',

4' x 6', 4' x 8', 6' x 6', 6' x 8'

**COLOR(S):** Black



***\*All Special Orders Require  
4 Week Lead Time.***

**Pictured:**

Close-up of molded tread-surface face cleats.



## SAFETY SCRAPE

Molded grip surface cleats effectively scrape tough dirt and grime from shoes. Excellent anti-slip / anti-static. UV stable.

**MATERIAL:** 100% Nitrile Rubber for oil and chemical resistance,

20% post-consumer recycled rubber content

**THICKNESS:** 1/8"

**SIZE(S):** 3' x 5', 4' x 6' / Custom

**COLOR(S):** Black

**BORDER(S):** available in 4 OSHA-approved color-strip safety borders



# MATTING

## WATERHOG CLASSIC MATS

Rubber gripper backing for minimum slipping. No cracking or crushing for life of mat. Water dam around perimeter prevents slip / fall hazards.

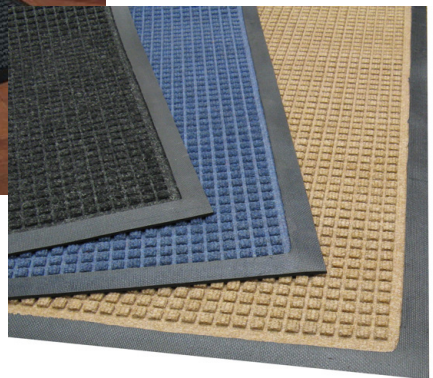
**MATERIAL:** 100% post-consumer recycled polyester fibers - plastic bottles (face) and 20% post-consumer recycled rubber (backing)

**THICKNESS:** 3/8"

**SIZE(S):** 3' x 5', 4' x 6'

Special Order: 2' x 3', 3' x 4', 3' x 8', 3' x 10', 3' x 12', 3' x 16',  
3' x 20', 4' x 6', 4' x 10', 4' x 12', 4' x 16', 4' x 20', 6' x 8', 6' x 12' 6' x 16', 6' x 20'

**COLOR(S):** Medium Gray, Dark Brown, Charcoal, Red/Black, Medium Blue, Medium Grey, Bluestone, Evergreen, Bordeaux, Navy, Light green, Aquamarine, Gold, Solid Red, Yellow, Orange, purple, White, Camel



# MATTING



## LOGO MATS

PacMat provides custom logo mats and inlay logo mats utilizing a state of the art Ultra Sonic Cutting Machine. Mats can be made from not only our rubber and vinyl backed goods but also vinyl tile, sheet goods, rubber and carpet materials. Contact us today with your custom artwork and we'll be happy to discuss opportunities and options available!

**MATERIAL:** Rubber, Vinyl, Matting, Linoleum, Carpet, Sheet Goods

**SIZE(S):** Custom

# PRODUCTION MATS



PRODUCTION MATS

## EDGING AND SEAMING

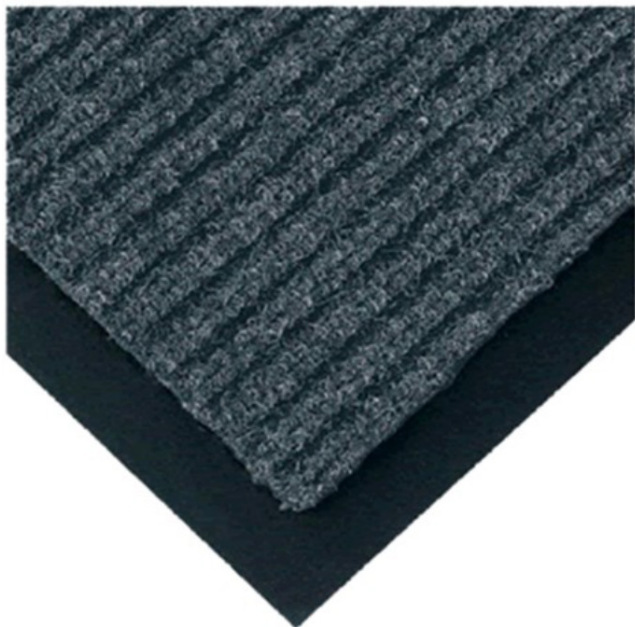
---

Edging provides finished mitered edge for smooth transition borders. Seaming provides additional advantage of allowing the matting to be used in non-standard applications.

**MATERIAL:** Extruded Vinyl

**SIZE(S):** High, Medium, or Low Profiles available

**COLOR(S):** Black (all profiles), Steel Gray (in medium profile only)



# PRODUCTION MATS

## SUPER NOP 52

Unbeatable resistance to wear, UV & staining. Large nop design provides outstanding scrubbing action.

**MATERIAL:** 100% Asota solution-dyed UV stabilized polypropylene fibers

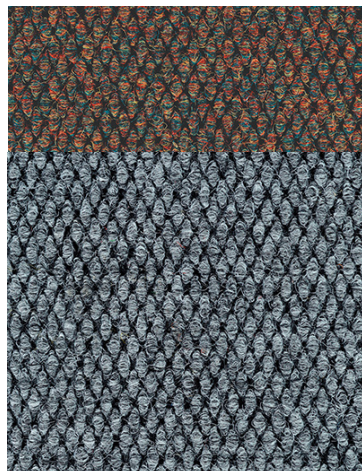
**ROLL SIZES:** 6'7" or 13'2" wide x 3/8" thick

**ROLL PILE WEIGHT:** 52 oz/yd

**WARRANTY:** 3 Year limited

**COLORS:** Autumn, Azure, Beige, Brown, Burgundy, Choco, Crimson, Forest, Garnet, Grijis/Charcoal, Hunter Green, Loden, Midnight Blue, Natural, Rosewood, Sand, Steel Blue, Sterling, Taupe, Verdi, Walnut, Zinc

**LOGO COLOR(S):** Pink, Kelly Green, Turquoise, Sky Blue, Royal Blue, Purple



## BERBER NOP

Needlepunch construction with large nop design providing outstanding scrubbing action.

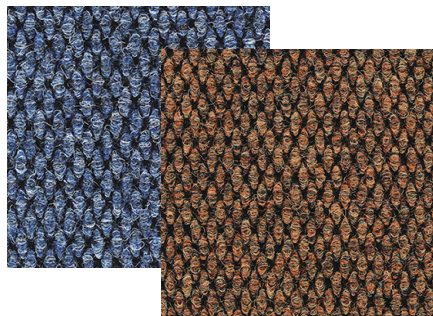
**MATERIAL:** 100% Asota solution-dyed UV stabilized polypropylene

**THICKNESS:** 3/8"

**PILE WEIGHT:** 37 oz./sy

**SIZE(S):** 6'7" , 13'2"

**COLOR(S):** Grijis/Charcoal, Light Gray, Choco, Beige, Natural, Steel Blue, Rood, Burgundy, Emerald, Dark Green



# ROLL GOODS

Blend of fibers for aggressive scraping and drying in each step.  
Lavish carpet-like appearance.

**MATERIAL:** 100% premium polyamide nylon fibers with 10% post consumer recycled content

**THICKNESS:** 3/8"

**PILE WEIGHT:** 24.2 oz./sy, 1sy holds 1.3 gallons of water & 9.2 lbs. of soil,  
May qualify for LEED points, 33% recycled fibers

**SIZE(S):** 6'7"

**COLOR(S):** Charcoal, Dark Gray, Cocoa, Brown, Blue, Red, Charcoal Splash,  
Brown Sugar, Cocoa Butter



ROLL GOODS

## CHICAGO

Blend of fibers for aggressive scraping and drying in each step.

**MATERIAL:** 100% premium polyamide nylon fibers with 10% post consumer recycled content

**THICKNESS:** 5/16"

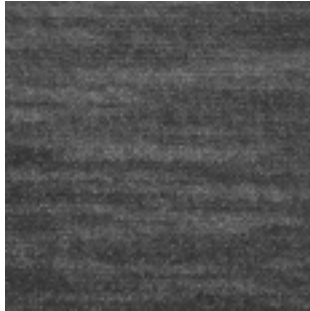
**PILE WEIGHT:** 30 oz./sy, Class 1 fire rating, 12% recycled content

**SIZE(S):** 6'7" , 13'2"

**COLOR(S):** Brown, Charcoal, Dark Gray, Mocha



Available in a variety of colors!



# ROLL GOODS

## FOSS ENTRY MATTING

Indoor/outdoor needlebond carpet tile. Fade and stain resistant, easy to install. Will not fray, zipper or unravel. Made from 100% post consumer plastic bottles!

**MATERIAL:** PET fiber polyester

### Square Tiles

**SIZE(S):** 24" x 24"

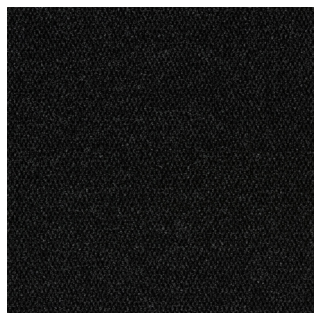
**COLOR(S):** Charcoal, Mahogany, Ash

**WEIGHT:** 40z/per sq yard

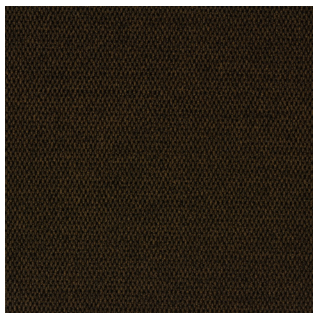
### Roll Widths

**SIZE(S):** 6" and 12"

**COLOR(S):** Charcoal, Mahogany, Ash



Charcoal



Mahogany



Ash

# ROLL GOODS

## COCOA (BRUSH FIBER)

---

Natural rough highly absorbent and durable fiber.

**MATERIAL:** Natural cocoa fiber with textured solid vinyl backing

**THICKNESS:** 5/8"

**SIZE(S):** Roll - 6'7" x 39'4" approx.

Custom Cuts - 6'7" x 39'4" approx.

**COLORS:** Charcoal, Dark Gray, Light Gray, Brown, Natural



# ROLL GOODS

## SUPER NOP 52 TILE



Unbeatable resistance to wear, UV & staining. Large nop design provides outstanding scrubbing action.

**MATERIAL:** 100% Asota solution-dyed UV stabilized polypropylene fibers

**BACKING:** Eco-Bitumen

**TILE SIZES:** \*19-11/16" x 19-11/16" x 1/2" thick

**TILE PILE WEIGHT:** 141 oz/sy

**PACKAGING:** 12 Tiles, 32.4 sf/ctn, Full ctns only

**WARRANTY:** 3 Year limited

**COLOR(S):** Autumn, Grijis/Charcoal, Walnut, Zinc



## DIAGONAL TILE

Diagonal rib scrapes dirt and moisture. Dimensionally stable; won't shrink or curl. Engineered to withstand constant foot traffic.

**MATERIAL:** 100% solution-dyed UV stabilized polypropylene fibers (52.05% post-consumer recycled content); bitumen backing

**THICKNESS:** 3/8"

**SIZE(S):** 19-11/16" x 19-11/16"

**COLOR(S):** Beige, Bronze, Espresso, Black Walnut, Lichen, Gray, Charcoal, Blue



# MODULAR TILE

## WATERHOG CLASSIC TILE

Rubber gripper backing for minimum slipping. No cracking or crushing for life of mat. Water dam around perimeter prevents slip / fall hazards.

**MATERIAL:** Rubber reinforced polypropylene face fiber in bi-level construction

**THICKNESS:** 1/4" or 7/16"

**SIZE(S):** 17" x 17", 18" x 18"

**COLOR(S):** Medium Gray, Charcoal, Dark Brown, Blue, Medium Brown, Light Green, Red/Black, Medium Blue, Bluestone, Evergreen, Bordeaux, Navy, White, Aquamarine, Gold, Solid Red, Yellow, Purple, Camel, White



## TIRE TILE

Withstands cleats and spikes while removing soil/moisture from shoes. Impervious to all weather elements.

**MATERIAL:** High-recycled, rubberized fabric strips - surface from recycled tires bonded to nonflammable base

**THICKNESS:** 3/8"

**SIZE(S):** 12" x 12"

**COLOR(S):** Standard (Earth Tone)



# MODULAR TILE

## REESE ROLL-UP GRATE MATTING & RECESSED FRAMES

For both recessed and surface installations. Specifically designed to easily remove dirt, mud, etc. Elegant yet practical; multiple inserts and rails available.

**MATERIAL:** Inserts - nylon carpet, diamond peak vinyl, polypropylene brush, vinyl abrasive, serrated aluminum, abrasive aluminum

Rails - rubber or aluminum hinge

**ALUMINUM FINISH:** Mill, Clear, Black, Dark Bronze, Dark Burgundy, Wine Rose, Light Beige, Brass, Gold Brush

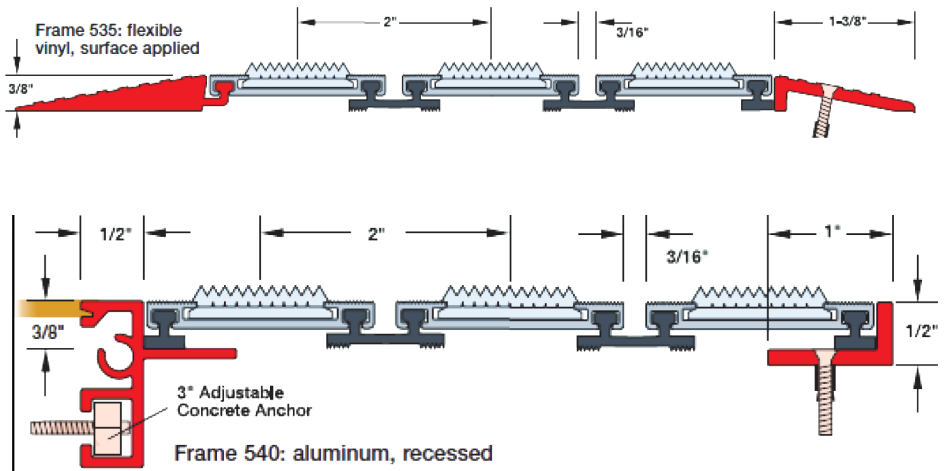
**SIZE(S):** Custom

**COLOR(S):** Assorted options available

*\*Contact Customer Service for Specific Product Information!*



# GRATES & FRAMES



# GRATES & FRAMES

## GYM SHIELD I

---

Non-woven, 100% solution dyed polypropylene UV stabilized fiber with composite rubber backing.

**MATERIAL:** Solution dyed polypropylene

**Weight:** 43 oz/sy

**TOTAL THICKNESS:** .625"

**TILE SIZE:** 36" x 72"

**COLOR(S):** Grigs/Charcoal, Light Gray, Choco, Beige, Steel Blue, Rood, Burgundy, Emerald



# GYM & SPORTS



*Pictured: Seattle Thunderbirds locker room rubber multi-functional sports flooring from Johnsonite.*

## More Than Flooring

---

We also offer distinctive production services where we make your flooring designs a reality! Our digital drawing program transfers your designs or pictures into flooring "art".

This is achieved with an Ultra Sonic Image Cutter, a computerized supersonic cutting machine that can cut most carpet & vinyl products into any two-dimensional shape. To see more, check out our Custom Design Gallery. Our customer service desk is available to answer any questions you have. We can provide you with more detailed product information, help place orders, assist in setting you up as a dealer and much more!



**COMMERCIAL | RESIDENTIAL | HARD SURFACES**