

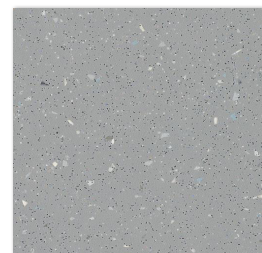


FLOORING SYSTEMS

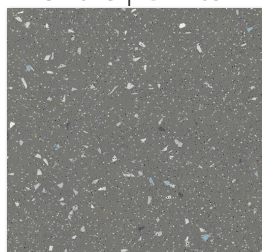
Eternal SafeStep R11



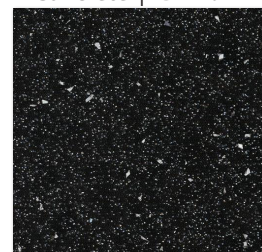
Smoke | FB174032



Concrete | FB174922



Elephant | FB174952



Charcoal | FB174992

Specifications:

Construction: Heterogeneous

Total Thickness: 2 mm (0.080")

Wear Layer: 0.7 mm (.028") PUR Pearl finish - slip resistant particles throughout

Wear Surface: Recycled step crystals in the wear layer, clear & colored design visual, easy to clean and maintain

Compact Backing Layer: 60% recycled content. Allows high static & dynamic loads - minimum indentation

Dimensional Stability: Glass fleece interlayer (fiberglass scrim)

Slip Resistant: Meets Din 51130 standard R11

Low Gloss Surface: Allows low-scuff natural look

Roll Dimensions: 6'7" x 82' (approximately)

Warranty: 10-year limited wear

Adhesive: V885 acrylic adhesive - non wet areas, max rH 85%
660 2-part polyurethane adhesive, wet areas, high rolling loads, max rH 80%

Seam: Heat weld, solid coordinating rod, 165 linear feet per coil, 4.0 MM rod

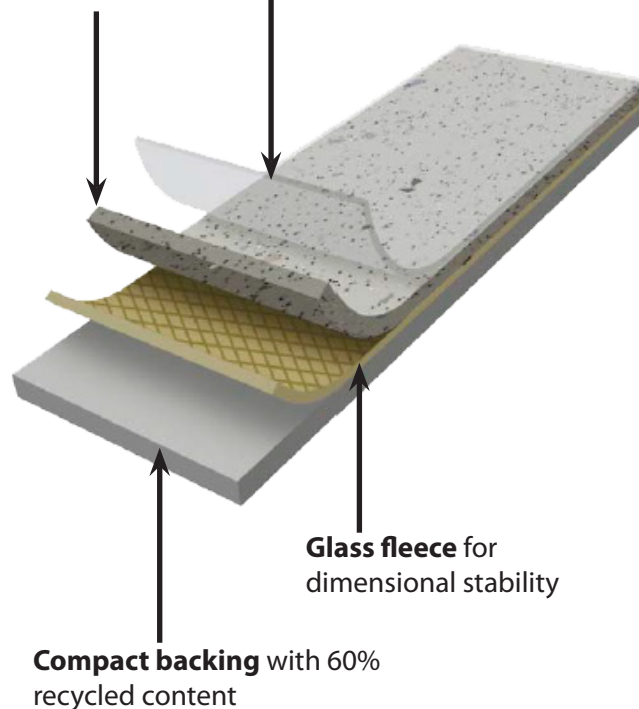
Static Load Limit: ASTM F970, standard method, 850 psi

Drain Recommendations: Clamping style

Reverse sheets when installing

Clear and colored wearlayer
with anti-slip particles

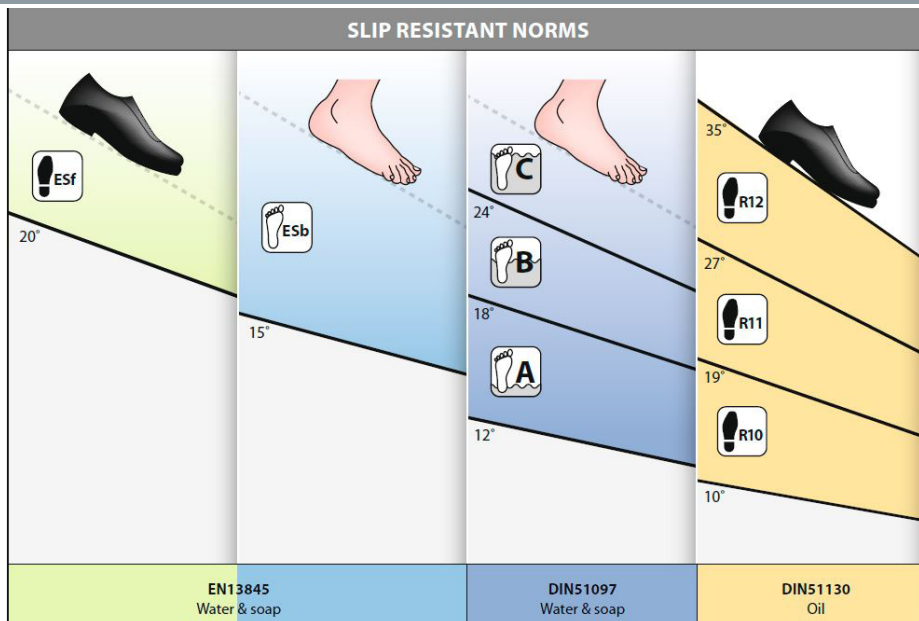
Scratch resistant **PUR Pearl**
with anti-slip particles



Glass fleece for
dimensional stability

Compact backing with 60%
recycled content





All
Suresteps Laguna
Safestep Aqua
Suresteps Laguna (B)
Safestep Aqua (C)
All Suresteps R10
Safestep R11
Safestep R12
Safestep Aqua R10

Floors are often evaluated on slip resistance performance by using the R-scale, which is linked to the Din 51130 standard. Measuring slip resistance on a ramp covered with oil at different angles and thereby resulting in different classes of slip. Step safety flooring is covering the most relevant classes of R1 to R12, in a comprehensive range of products that are used in conditions where footwear is the standard.

Where to use Forbo Eternal SafeStep R11:

Gourmet Kitchens <100 meals a day (> 100 meals a day requires R12 construction)		
Community Kitchens	Vehicle Maintenance Shops	Leather/Textile Production
Food Production	Milk Processing/Cheese Production	Ceramics Industry
Cold Room/Freezer Rooms	Commercial Spaces	Processing Glass/Stone
Food & Beverage - Wet Areas	Chocolate Manufacturing	Storerooms
Laundry Rooms (all)	Aircraft Maintenance Shops	Wine Cellars
Ramp Areas - Indoors	Parking Lobby Areas	General Storage Areas
Meat Products Operations	Manufacture of Bakery Products	Schools - Kitchens, Bathrooms, Wet Areas
Health Care - Rooms, Bathrooms, Sterilization	Longterm Care - Kitchens/Dining Rooms	

LEED (version 4) Potential direct or indirect contribution to following categories and credits	Materials & Resources	Building product disclosure & optimization - EPD up to 2 points
		Building product disclosure & optimization - sourcing of raw materials - up to 1 point
		Construction & demolition waste management up to 2 points
	Indoor environmental quality	Low emitting materials up to 3 points
		Acoustic performance up to 1 point