



PAC MAT
RESIDENTIAL | COMMERCIAL | MATTING

12' SHEET VINYL ASPIRE

RELEVANT | 12', 55mil Gauge



Light Breeze - ARG28122



Cafe Cream - ARG28102



Brown Bay - ARG28112



Anchor Gray - ARG28162



Long Beach - ARG28152

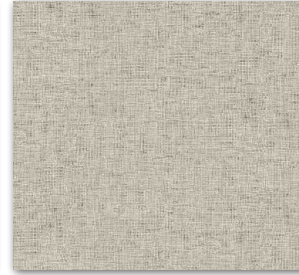


Pebble Stone - ARG28172

LEGACY | 12', 150mil Gauge



Espresso Brown - ARG48172



Latte - ARG48162



Kingston Fog - ARG48152

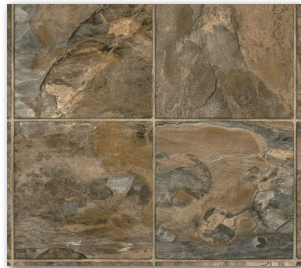


Seattle Storm - ARG48182

LIBERTY | 12', 150mil Gauge



Fusion - ARG48472



Italian Earth - ARG48442



Maiden's Blush - ARG48432

SPECIFICATIONS

Packaging:

Relevant: 12' roll, 55mil Gauge, Average Roll Size: 150lf

Legacy: 12' roll, 150mil Gauge, Average Roll Size: 75lf

Liberty: 12' roll, 150mil Gauge, Average Roll Size: 75lf

Wear Layer:

Urethane

Construction:

Glass-backed Sheet Vinyl

Warranty:

10-yr Residential

Installation:

Modified Loose Lay or Full Spread

Adhesive:

S-288 or S-289 Releasable Adhesive, S-761 Seam Adhesive

FEATURES & BENEFITS

Lightweight, flexible, quick and easy to install.

Superior stain protection with added antimicrobial protection.

Easy to repair - releasable adhesive installation available!

Additional specifications, full installation instructions and warranty information available online at www.pacmat.com.

STOCKED
IN KENT

PACIFIC MAT
COMMERCIAL | RESIDENTIAL | HARD SURFACES